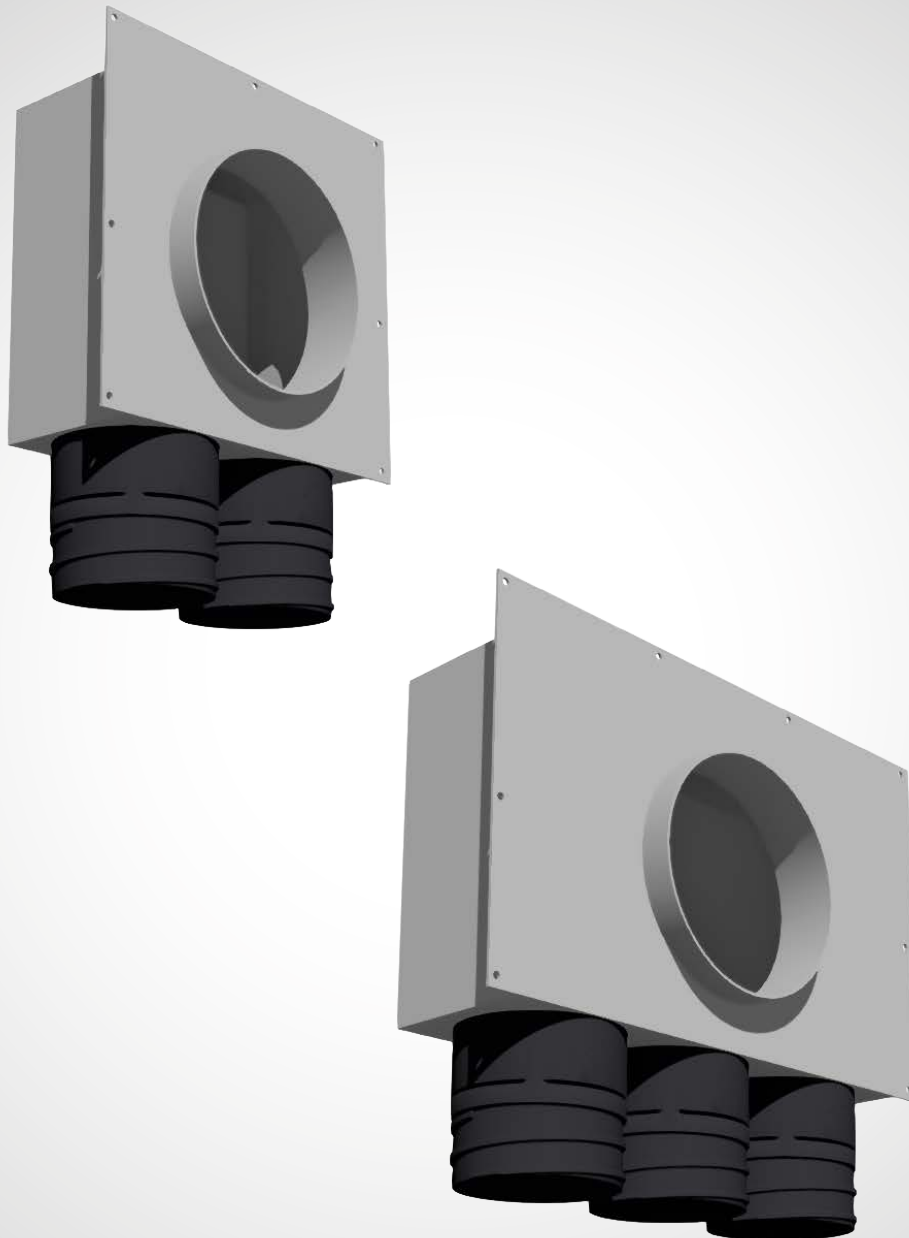


# RND-2T, RND-3T

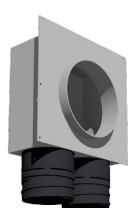
Technical specification for Round Boot, 2-Tube and 3-Tube  
(specific to North America)



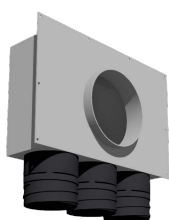
## General

Zehnder RND-2T and -3T "round boots" are intended for installing 125mm round Zehnder Supply Air and Extract Air room terminations. These include Zehnder Luna supply and extract valves and Zehnder Venezia grilles. The boots can be used for either wall- or ceiling-mounted terminations. The -2T allows connection with up to two "tubes" (Zehnder ComfoFlex 3" duct or Zehnder ComfoTube 75mm duct). The -3T allows connection with up to three tubes. The boots are designed for a minimum 3-1/2" wall or ceiling cavity depth and for a minimum 1/2" surface finish (typically drywall). Mounting is provided by a perimeter flange to be fastened to the face of framing members.

## Round boots



RND-2T (Round Boot, 2-tube)



RND-3T (Round Boot, 3-tube)

## Benefits

- Simple installation, as mounting flange is built onto the boot housing
- Can be used for both supply and extract air
- Adjustable airflow performance with two sizes and calibration via Zehnder Luna valves or with an optional ComfoSet damper (adjustable device inserted in duct when using the Venezia grille)
- Durable construction with easy access for cleaning
- Versatile solution for use in walls or ceilings
- Twist-connect fittings (included) are suitable for connecting 3" ComfoFlex ducts or 75mm ComfoTube ducts (see installation instructions for RND-2T and RND-3T)

## Specifications

Feature	Description
Housing material:	18 GA galvanized steel sheet
Housing depth:	3-1/2"
Round opening diameter:	125mm (5" +/-)
Connector material:	Molded thermoplastic
Connector diameter:	Outside 3" / Inside 75mm

## Associated optional products



Zehnder Luna-S supply valve



Zehnder Luna-E extract valve



Zehnder Venezia 125mm grille



Extract air cone filter

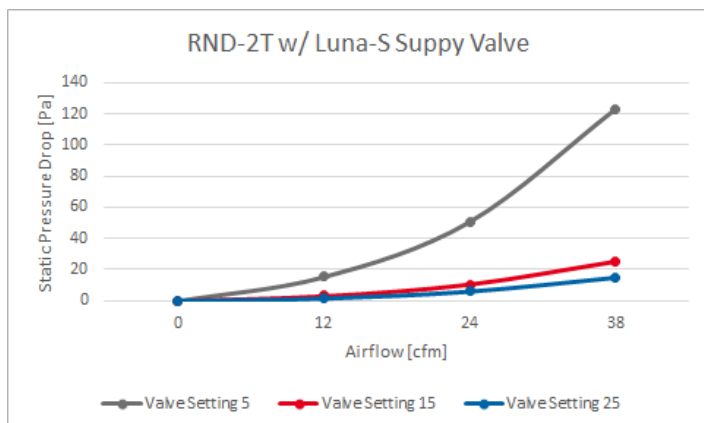


ComfoSet damper

## Part numbers

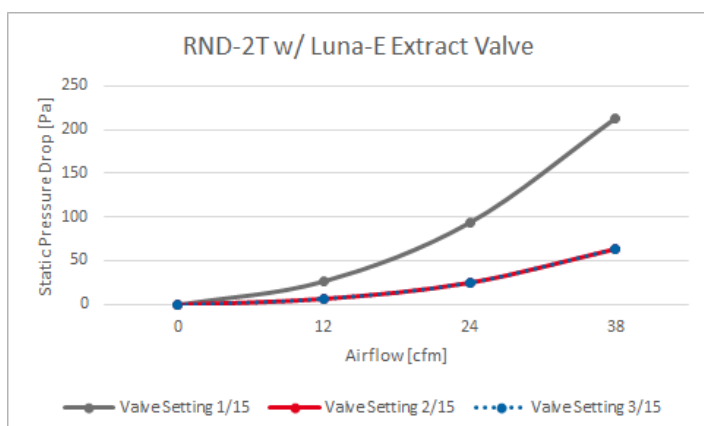
Description	Zehnder America part number
Round Boot, 2-Tube (RND-2T)	9789-00
Round Boot, 3-Tube (RND-3T)	9790-00
Luna-S 125mm supply valve	9609-00
Luna-E 125mm extract valve	9764-00
Venezia 125mm grille	9443-00
Extract air filter 125mm cone filter	9352-00
ComfoSet 75T Adjustable in-duct damper	9594-00

## RND-2T Pressure loss graphs



### Supply

Luna-S valve settings

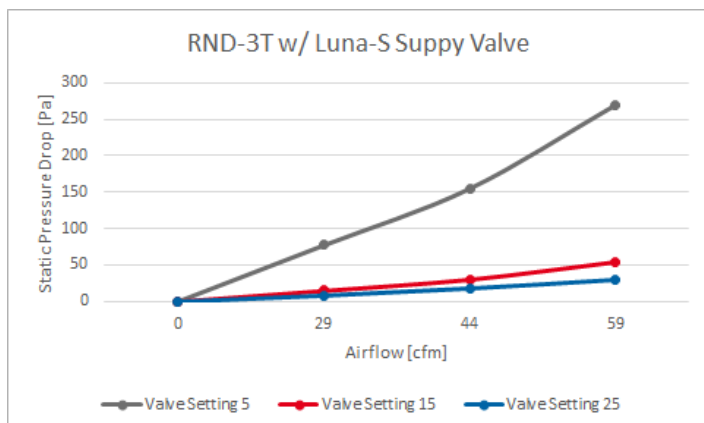


### Extract

Luna-E valve settings

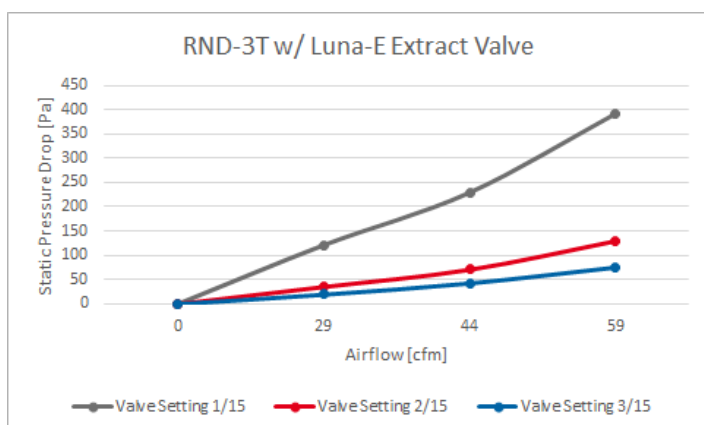


## RND-3T Pressure loss graphs



### Supply

Luna-S valve settings

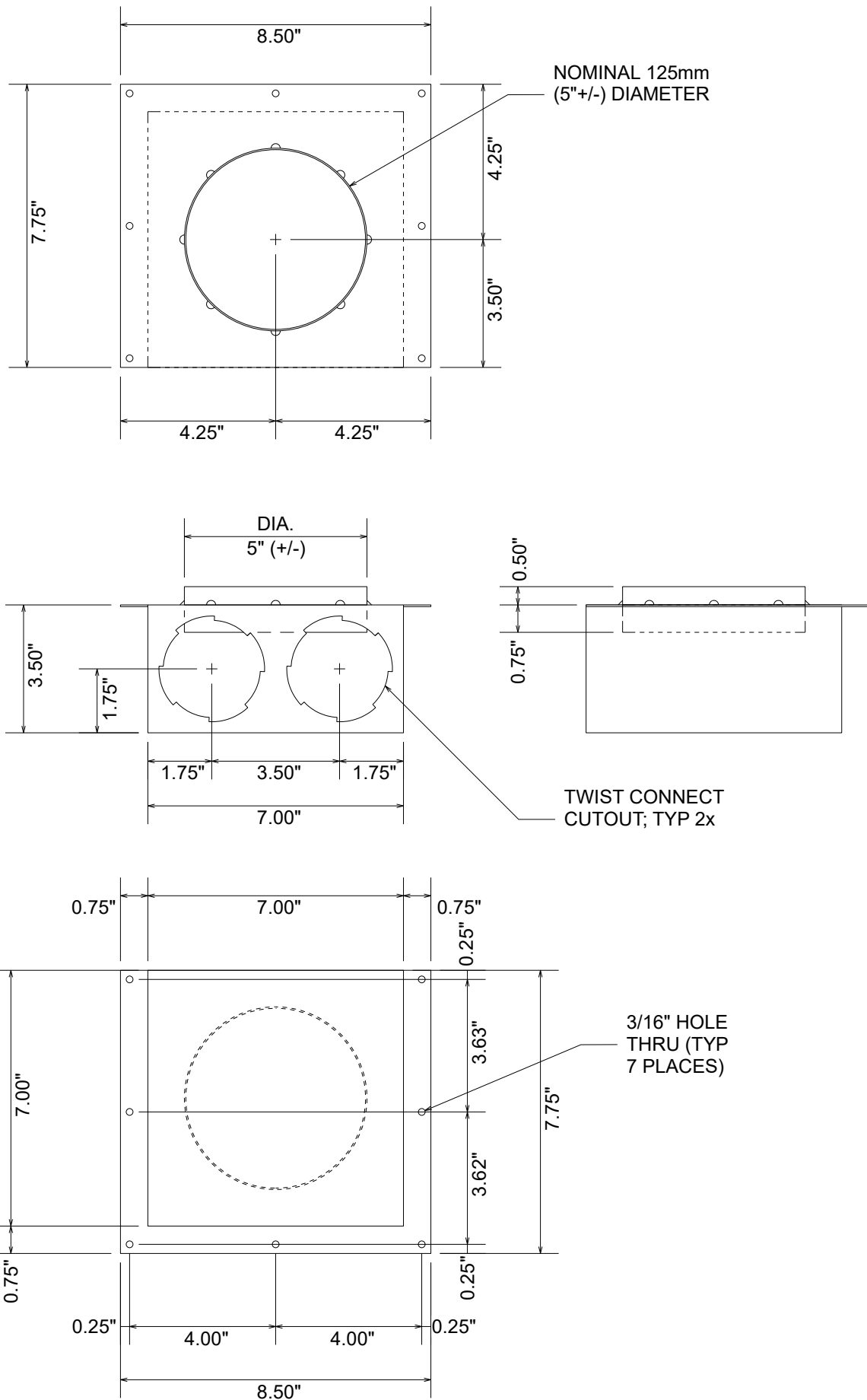


### Extract

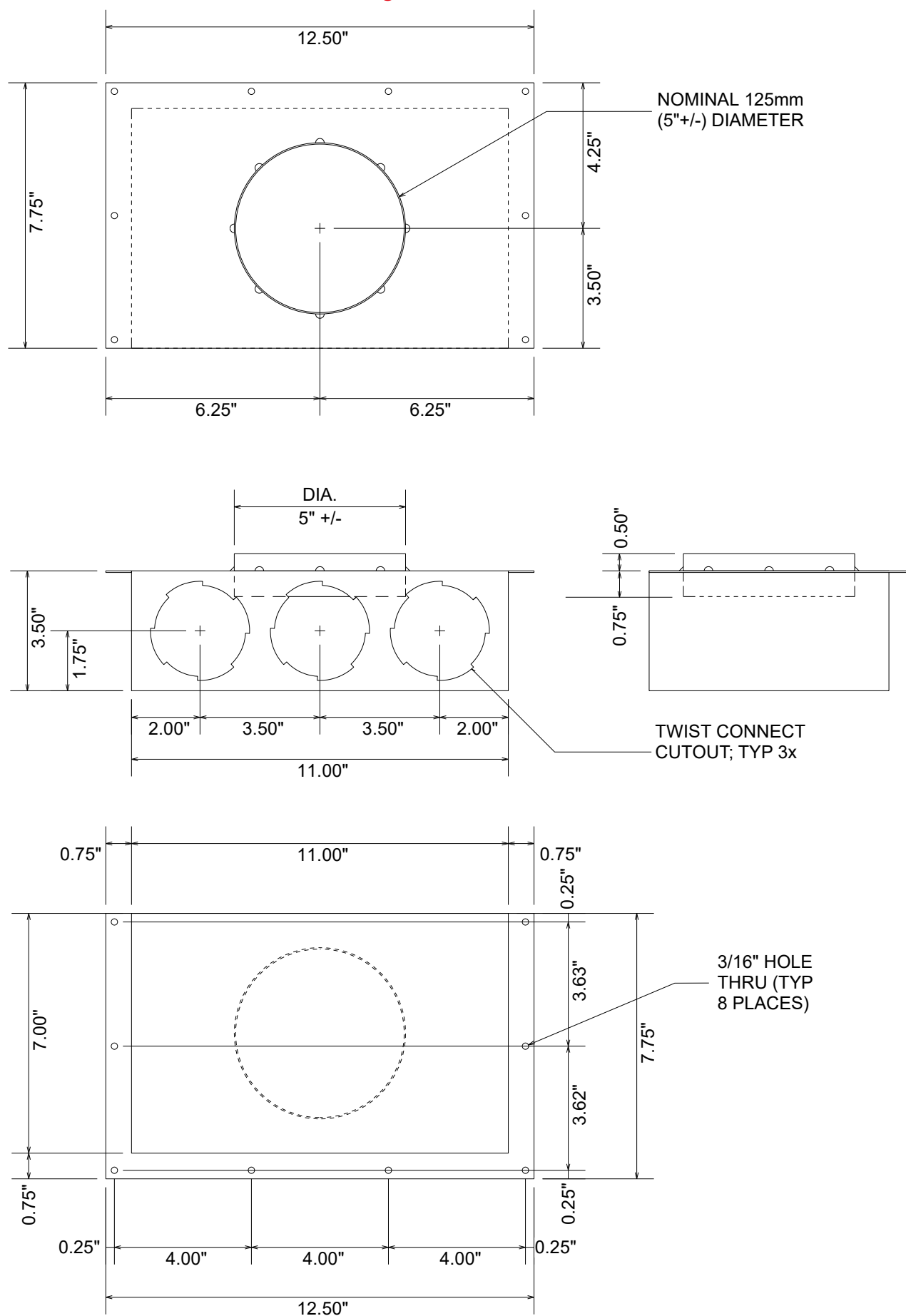
Luna-E valve settings



## RND-2T dimensional drawings



## RND-3T dimensional drawings



Zehnder\_America\_RND-2T,-3T\_Round\_Boot\_Technical\_Specification\_2021.12.07